









A blurred background image of a ship's superstructure, showing multiple decks, railings, and a bridge area with windows. The ship has a red hull and white upper sections.

# Content

## About Us

## Quality

### In-house and On-site Service and Calibration

- UTI (Ullage Temperature Interface)  
Tape / Portable Tank Gauging Device
- Portable Gas Detector
- Pressure / Temperature Gauge
- Pressure / Temperature Transmitter
- Portable Pressure / Temperature Calibrator
- Dew Point Meter
- Alcohol Detector
- Supply Span Gas

### Maintenance and Servicing

- Main / Auxiliary Engine  
Fuel Oil Viscosity Control
- Main Engine and Atmospheric  
Oil Mist Detector
- Oxygen Analyzer
- C.O.T. Independent / Bilge Alarm
- 15 PPM Oil Content Monitor
- Oil Discharge  
Monitoring Equipment (ODME)
- Fixed Gas Detection System
- Fire Alarm System
- Pump Room / Engine Room  
Pneumatic Pressure / Temperature  
Transmitter & Controller
- Pump Room / Engine Room  
Electronic Pressure / Temperature  
Transmitter & Controller
- Water Ballast Management System
- BNWAS System
- Electrical Motor Rewinding
- Main Engine Remote Pneumatic Control
- Ad-hoc General Automation



## ABOUT US

---

We are the answer to better quality servicing and calibration of various instrument so you can focus on your job and not on annual calibration certification. Our cutting-edge calibration facilities, together with highly trained and experienced team, you can assure your instrument will be taking care of, because we are committed to customer satisfaction. Call us today to find out what we can be your service!



## QUALITY

---

We focus on achieving quality goals and creating safer and healthier work environment so our employees can focus on delivering work excellence. We believe by doing so, you can assure our products and services you received are being satisfactory. After all, the company has adopted the motto of 'Surpassing Customer Satisfaction'.





UTI (Ullage Temperature Interface) Tape  
/ Portable Tank Gauging Device



Portable Pressure /  
Temperature Calibrator



Portable Gas Detector



Dew Point Meter



Pressure / Temperature Gauge



Alcohol Detector



Pressure / Temperature  
Transmitter



Supply Span Gas





Main / Auxiliary Engine Fuel  
Oil Viscosity Control



15 PPM Oil Content Monitor



Main Engine / Atmospheric Oil  
Mist Detector



Oil Discharge Monitoring  
Equipment (ODME)



Oxygen Analyzer



Fixed Gas Detection System



C.O.T. Independent / Bilge Alarm



Fire Alarm System





Pump Room / Engine Room  
Pneumatic Pressure / Temperature  
Transmitter & Controller



BNWAS System

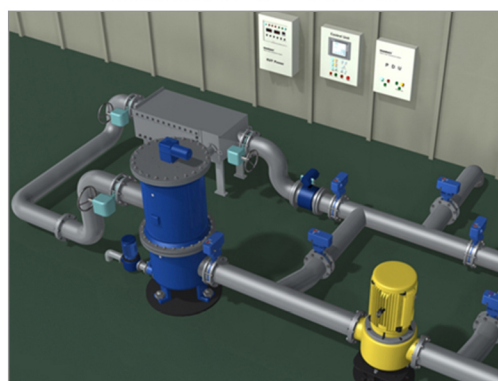


Pump Room / Engine Room  
Electronic Pressure / Temperature  
Transmitter & Controller



Electrical Motor Rewinding

- Main Engine Remote Pneumatic Control
- Ad-hoc General Automation



Water Ballast Management System





## **Sea Hover Technologies Pte Ltd**

48 Toh Guan Road East  
#04-154/155 Enterprise Hub  
Singapore 608586  
Tel: +65 6267 8061  
Fax: +65 6267 8062  
Email: [sales@seahover.com](mailto:sales@seahover.com)

[www.seahover.com](http://www.seahover.com)

